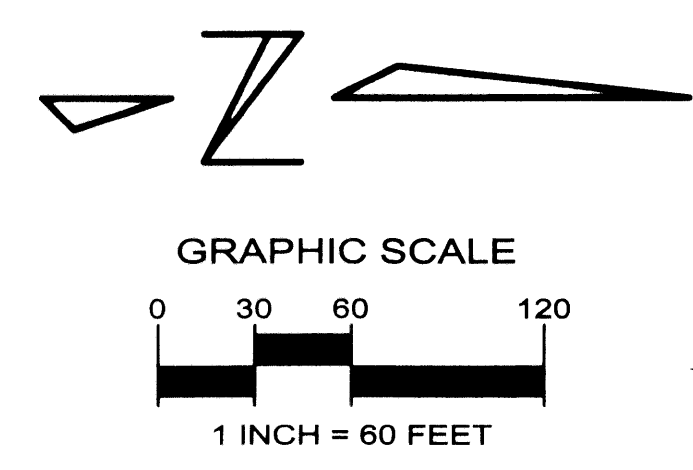


OLD PALM PLAT FOUR

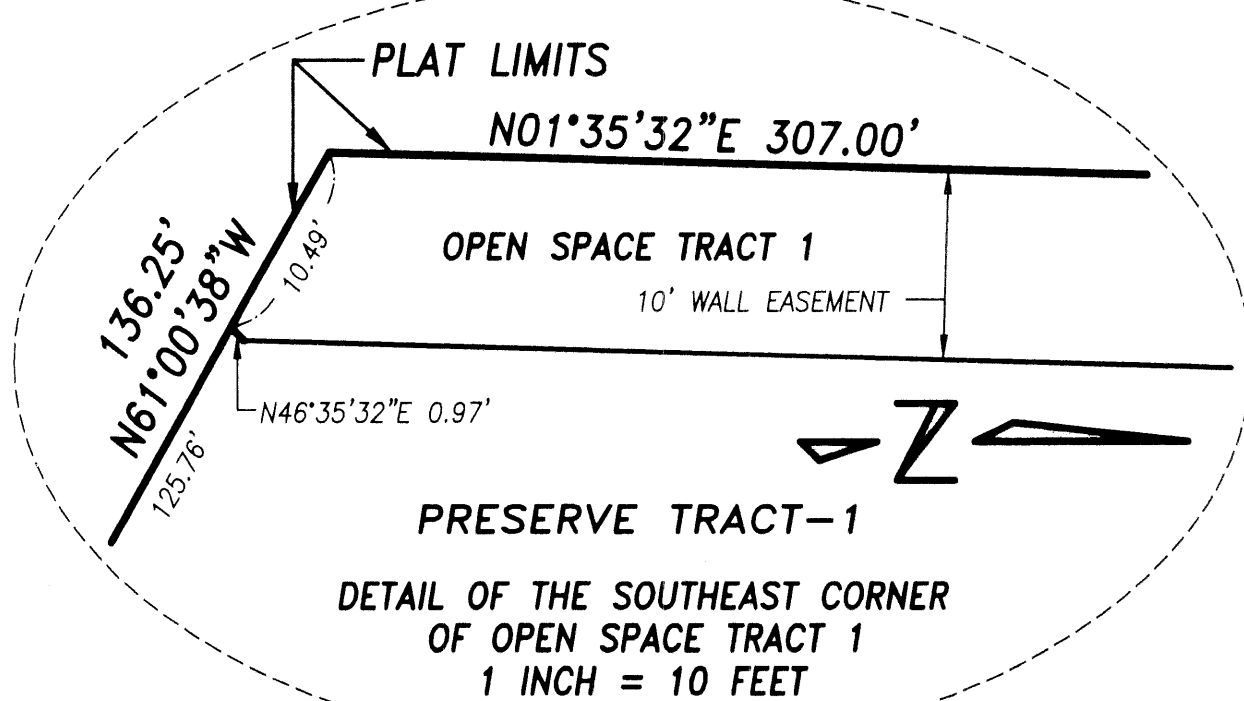
A REPLAT OF A PORTION OF PARCEL 1, OLD PALM PLAT 1 AS RECORDED IN PLAT BOOK 96, PAGES 31 THROUGH 34, PUBLIC RECORDS OF PALM BEACH COUNTY, FLORIDA LYING IN THE SOUTHWEST ONE-QUARTER OF SECTION 35, TOWNSHIP 41 SOUTH, RANGE 42 EAST, AND THE WEST ONE-HALF OF SECTION 2, TOWNSHIP 42 SOUTH, RANGE 42 EAST CITY OF PALM BEACH GARDENS, PALM BEACH COUNTY, FLORIDA SHEET No.5 OF 5 FEBRUARY 2004

RONALD REAGAN TURNPIKE (VARIABLE WIDTH) (FORMERLY THE SUNSHINE STATE PARKWAY) FLORIDA DEPARTMENT OF TRANSPORTATION RIGHT-OF-WAY MAP "STATION 3334+58.46 TO STATION 3343+22.17" SHEET 8 OF 12, DATED SEPTEMBER 27, 1955

PALM BEACH COUNTY BRASS DISK NW CORNER OF THE SW ONE-QUARTER OF SECTION 2, TOWNSHIP 42 SOUTH, RANGE 42 EAST OLD PALM PLAT 1 - (P.B. 96, PG. 31)



UNPLATTED (ACCESS RIGHTS, O.R.B. 1115, PAGE 286) PARTIAL RELEASE IN (O.R.B. 4411, PAGE 1009)



OLD PALM PLAT TWO (PLAT BOOK 98, PAGE 139)

OLD PALM PLAT TWO (PLAT BOOK 98, PAGE 139)

SYMBOLS LEGEND

■	SET PERMANENT REFERENCE MONUMENT (P.R.M.) "L.B.4897"
○	PERMANENT CONTROL POINT (P.C.P.)
U.E.	UTILITY EASEMENT
D.E.	DRAINAGE EASEMENT
W.L.E.	WATER LINE EASEMENT
S.L.E.	SEWER LINE EASEMENT
WSE	WATER AND SEWER EASEMENT
SUA	SEACOAST UTILITY AUTHORITY
SUA ESMT.	SEACOAST UTILITY AUTHORITY EASEMENT
F.M.	FORCE MAIN
FPL	FLORIDA POWER AND LIGHT
O.R.B.	OFFICIAL RECORD BOOK
PG.	PAGE
R/W	RIGHT-OF-WAY
C/L	CENTERLINE
O.S.T.	OPEN SPACE TRACT
INT.	INTERSECTION
BL	BASELINE
→	CHANGE IN DIRECTION
P.S.M.	PROFESSIONAL SURVEYOR AND MAPPER
P.C.P.	PERMANENT CONTROL POINT
□	FOUND PERMANENT REFERENCE MONUMENT (P.R.M.) "L.B.4431"
NOTE:	THE SUA EASEMENTS SHOWN HEREON, (UNLESS OTHERWISE NOTED) ARE AS DESCRIBED IN OFFICIAL RECORD BOOK 16089, PAGE 1938 OF THE PUBLIC RECORDS OF PALM BEACH COUNTY, FLORIDA.

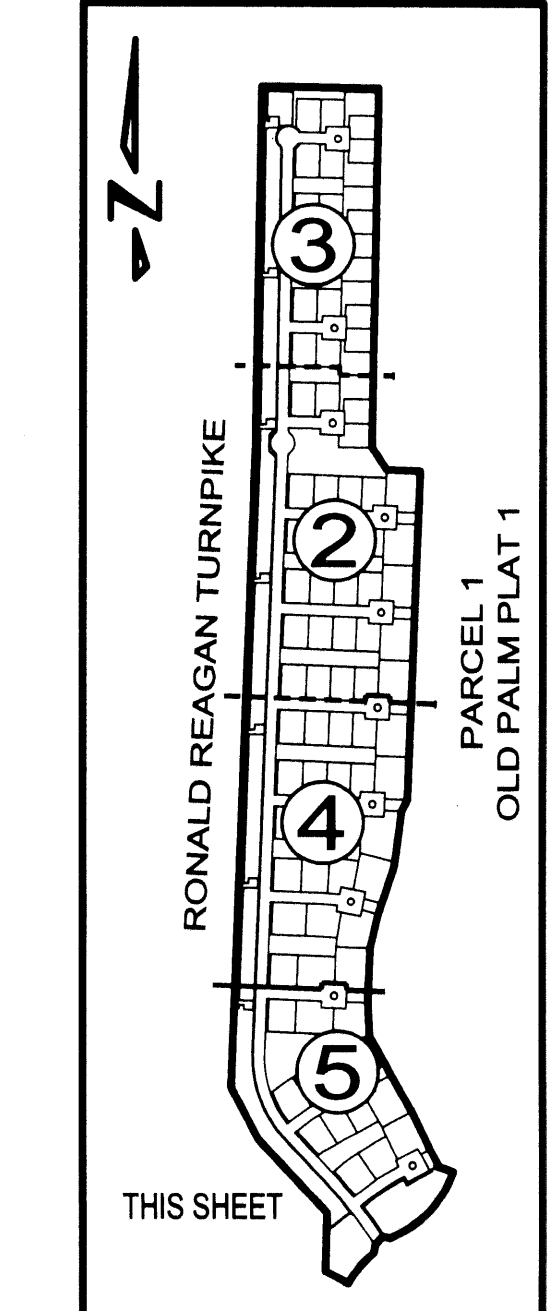
OPEN SPACE TRACT-2 PRESERVE TRACT-2

OLD PALM PLAT TWO (PLAT BOOK 98, PAGE 139)

PARCEL 1 OLD PALM PLAT 1 (P.B. 96, PG. 31)



Keshavarz & Associates, Inc.
CONSULTING ENGINEERS - SURVEYORS
711 N. Dixie Highway, Suite 201
West Palm Beach, Florida 33401
Tel: (561) 689-8600 Fax: (561) 689-7476 LB 4897
THIS INSTRUMENT WAS PREPARED BY MICHAEL K. HOKAN SR., PSM
PROFESSIONAL SURVEYOR AND MAPPER NO. 5494
IN THE OFFICES OF KESHAVARZ & ASSOCIATES, INC.
\\K1\SU\770_OLDPALM_PL4\dwg\770_PLAT_FOUR.dwg 3/1/2004 10:35:48 AM EST



INDEX SHEET MAP NOT TO SCALE

MATCH LINE - SEE SHEET 4 OF 5

MATCH LINE - SEE SHEET 4 OF 5

PARCEL 1 OLD PALM PLAT 1 (P.B. 96, PG. 31)

DETAIL OF OPEN SPACE TRACT 4 1 INCH = 30 FEET